

ZOOLOGICAL NOMENCLATURE: NOTICE OF PROPOSED USE OF THE PLENARY POWERS IN CERTAIN CASES FOR THE AVOIDANCE OF CONFUSION AND THE VALIDATION OF CURRENT NOMENCLATORIAL PRACTICE (A. [n.s.] 30).

Notice is hereby given that the possible use by the International Commission on Zoological Nomenclature of its Plenary Powers is involved in applications relating to the under-mentioned names included in Part 6 and Double-Part 7/8 of Volume 12 of the *Bulletin of Zoological Nomenclature*, both of which Parts will be published on 24th August 1956:

(a) Applications in Part 6 of Volume 12

1. *Campsicnemus* Haliday, 1851, validation of (Class Insecta, Order Diptera) (Z.N.[S]1080).

Any specialist who may desire to comment on the foregoing application is invited to do so in writing to the Secretary to the International Commission (Address: 28 Park Village East, Regent's Park, London, N. W. 1, England) as soon as possible. Every such comment should be clearly marked with the Commission's File Number as given in the present Notice. FRANCIS HEMMING, Secretary to the International Commission on Zoological Nomenclature.

SOME SOUTH AMERICAN APHIDS FROM PARAGUAY

(Homoptera: Aphidae)

E. O. ESSIG

University of California, Berkeley

Aphids collected at the Experiment Station, Chaco, Paraguay, February 22 to September 5, 1955 by J. L. Nickel.

1. Brown citrus aphid, *Aphis citricidus* Kirkaldy, on Kumquat, Caaupe, Feb. 22, 1956, six small apterous specimens.
2. Melon or cotton aphid, *Aphis gossypii* Glover, on cotton, Dec. 19, 1955, ten specimens—aptera and alates.
3. Cowpea aphid, *Aphis medicaginis* KOCH, on *Sesbania*, September 26, 1955. Five small immature specimens.
4. Oleander aphid, *Cerosipha nerii* (B.d.F.) on oleander, August 28, 1955. One alate, five immature and apterae.
5. Corn or maize aphid, *Rhopalosiphum maidis* (Fitch), on Sudan grass, September 26, 1955. Two slides, 14 apterae.
6. Turnip aphid, *Rhopalosiphum pseudobrassicae* (Davis), on turnip, September 26, 1955. Two slides, 10 apterae and two alates.
7. Paraguayan wild lettuce aphid, *Macrosiphum nickeli* n. sp. A large dark species.

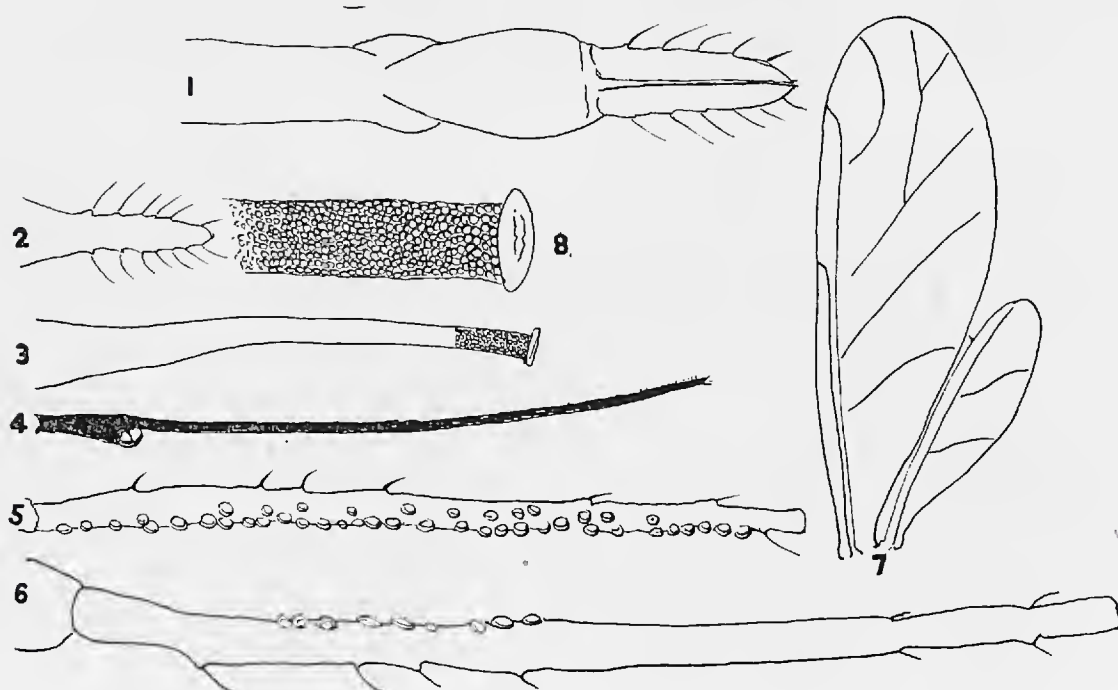
Macrosiphum nickeli Essig, new species

The Paraguayan Wild Lettuce Aphid

Type: EXPERIMENT STATION, CHACO, PARAGUAY, Alate parthenogenetic female: Appears to be dark reddish-brown with black or very dark markings on the head, thorax and appendages. The body spines are short and variously enlarged apically. The antennae are long and slender with 10 to 13 or more sensoria on segment III of the aptera and 40 to 43 on the alatae. The cornicles are rather long and slender being also straight or outwardly curved and with fine reticulations on the apical 1/5th. The length slightly exceeds that of antennal segment III. The rostrum is long and slender and extends slightly beyond the hind coxae. Segment III is considerably narrower than IV; both bear more hairs than usual.

The Apteræ are much the same as the alatae in general aspects. The antennae have 11 to 23 sensoria on segment III and the reticulations on the cornicles are more pronounced than those of the alatae and are often curved. The body hairs are pointed or slightly capitate and the integument densely lined with fine striae and bears a considerable number of short blunt and pointed setae and hairs. The rostrum is relatively slender and short and extends just beyond the second coxae.

The types are in the collection of the author.



EXPLANATION OF FIGURES

Fig. 1. The Paraguayan wild lettuce aphid, *Macrosiphum nickeli* Essig. 1, rostrum; 2, cauda; 3, cornicle and enlarged apical portion; 4, terminal antennal segment; 5, antennal segment III of the alate showing sensoria; 6, same for that segment of the apterae; 7, wings; 8, the apical reticulated portion of the antennae. All greatly enlarged.